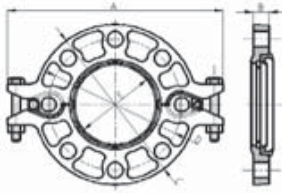


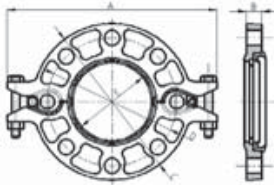


### Grooved Flange



Nominal Size mm/in	Pipe O.D mm/in	Working Pressure PSI/MPa	Dimensions					Bolt/Nut		Certificate
			A mm/in	B mm/in	C mm/in	D mm/in	E mm/in	No.-SIZE mm		
40 1½	48.3 1.900	225 1.6	195 7.68	19 0.75	150 5.91	110 4.33	45.4 1.78	2-M10X50	4-M16	UL FM VdS
50 2	60.3 2.375	225 1.6	220 8.66	19 0.75	166 6.54	125 4.92	57.5 2.26	2-M10X50	4-M16	UL FM VdS
65 2½	76.1 3.000	225 1.6	235 9.25	19 0.75	185 7.28	145 5.71	72.7 2.86	2-M10X50	4-M16	UL FM VdS
80 3	88.9 3.500	225 1.6	252 9.72	19 0.75	192 7.56	160 6.30	85.5 3.37	2-M10X50	8-M16	UL FM VdS
100 4	108.0 4.250	225 1.6	277 10.91	19 0.75	220 8.66	180 7.09	104.5 4.11	2-M12X55	8-M16	UL FM
100 4	114.3 4.500	225 1.6	277 10.91	19 0.75	224 8.83	180 7.09	110.5 4.35	2-M12X55	8-M16	UL FM VdS
125 5	133.0 5.250	225 1.6	312 12.28	22 0.87	246 9.68	210 8.27	129.2 5.08	2-M12X65	8-M16	UL FM
125 5	139.7 5.500	225 1.6	318 12.52	23 0.87	242 9.84	210 8.27	135.5 5.33	2-M12X65	8-M16	UL FM VdS
150 6	159.0 6.250	225 1.6	346 13.62	22 0.87	280 11.00	240 9.45	160.8 6.33	2-M12X65	8-M20	UL FM
150 6	165.1 6.500	225 1.6	346 13.62	23 0.91	280 11.00	240 9.45	160.8 6.33	2-M12X65	8-M20	UL FM
165 6½	168.3 6.625	225 1.6	346 13.62	23 0.87	285 11.22	240 9.45	164.3 6.47	2-M12X65	8-M20	UL FM VdS

### Grooved Flange



Nominal Size mm/in	Pipe O.D mm/in	Working Pressure PSI/MPa	Dimensions					Bolt/Nut		Certificate
			A mm/in	B mm/in	C mm/in	D mm/in	E mm/in	No.-SIZE mm		
50 2	60.3 2.375	300 2.07	209 8.23	19 0.75	153 6.02	121 4.76	57.5 2.26	2-M10X50	4-5/8	UL FM
65 2½	73.0 2.875	300 2.07	232 9.13	19 0.75	178 7.00	140 5.51	69.8 2.74	2-M10X50	4-5/8	UL FM
80 3	88.9 3.500	300 2.07	246 9.72	19 0.75	192 7.56	152 5.98	85.5 3.37	2-M10X50	4-5/8	UL FM
100 4	114.3 4.500	300 2.07	280 11.02	19 0.75	229 9.00	191 7.52	110.5 4.35	2-M12X55	8-5/8	UL FM
125 5	141.3 5.563	300 2.07	321 12.64	22 0.87	250 9.84	216 8.50	137.4 5.41	2-M12X65	8-3/4	UL FM
150 6	168.3 6.625	300 2.07	346 13.62	22 0.87	285 11.22	241.3 9.50	164.3 6.47	2-M12X65	8-3/4	UL FM